

Mutual Loss Prevention Advocates



LOSS PREVENTION SEMINAR OCTOBER 11TH -12TH, 2012 THE KALAHARI RESORT, WISCONSIN DELLS, WI

Thursday, October 11th, 2012

- 12:30 p.m. - 1:00 p.m.** **Registration**
- 1:00 p.m. – 2:30 p.m.** **Investigating First-Party Fire Claims**
Brad Ayers & Greg St. Onge
- 2:30 p.m. - 2:45 p.m.** **Break**
- 2:45 p.m. – 4:30 p.m.** **Litigating First-Party Fire Claims**
Brad Ayers & Greg St. Onge
- 4:30 p.m. – 5:30 p.m.** **Break**
- 5:30 p.m. - 7:30 p.m.** **Working Social - Dinner Provided – Rathskellar Room**
Moosejaw Pizza & Brewing Co.
110 Wisconsin Dells Parkway S.

Friday, October 12th, 2012

- 8:00 a.m. – 8:30 a.m.** **Summary of Working Social**
Jeff Blevins
- 8:30 a.m. – 9:30 a.m.** **Who's At Home? Determining Occupancy**
Lana Mueller
- 9:30 a.m. – 9:45 a.m.** **Break**
- 9:45 a.m. – 10:45 a.m.** **Insurance to Value** **Lana Mueller**
- 10:45 a.m. – 11:00 a.m.** **Break**
- 11:00 a.m. – 12:00 p.m.** **UW Tools: Applications & Loss History Reports**
Lana Mueller
-

2012 MLPA Committee Members:

Steve Morris, DuPont Mutual, steven@dupontmutual.com
Christine Sorenson, Racine County Mutual, csorensonrcm@aol.com
Brad Baloun, Heartland Mutual brad@heartlandmutual.com
Chris Griesbaum, Friestatt Mutual, friestattmutual@mo-net.com
Judy Bickel, Lebanon-Clyman Mutual lcmi@netwurx.net

MLPA supports the loss prevention efforts of inspectors, underwriters and adjusters for small mutual insurance companies by providing opportunities for education and the development of cordial peer business relationships.

Send your loss prevention success stories to bstokke@thewrcgroup.com for a chance to win a free MLPA shirt! Best story wins!!

.....

WHO SHOULD ATTEND:

***Your entire team—
Offense,
Defense, and
Special Teams!***

Inspectors
Underwriters
Claims Adjusters

An individual player can make a good play, but it takes the entire team working together to win the game and have a successful season!

2012 MLPA “Roster”:

Chairman:
Steve Morris, DuPont Mutual Insurance

Members:
Christine Sorenson, Racine County Mutual
Brad Baloun, Heartland Mutual
Chris Greisbaum, Friestatt Mutual

Past Chairman:
Judy Bickel, Lebanon-Clyman Mutual

Contact any committee member with your ideas for future MLPA events and newsletters!

Wisconsin Reinsurance Corporation
PO Box 7988
Madison, WI 53707-7988

MLPA



.....

You've made the team, so don't miss the **BIG GAME!**

**Oct. 11th & 12th, 2012
Wisconsin Dells
Kalahari Resort**

PRESENTERS

Bradley J. Ayers

Attorney at Morrison Sund PLLC

Greg St. Onge

Cause and Origin Investigator

Lana Mueller

Vice President Underwriting, WRC

MLPA Committee

and **YOU!**

October 11-12, 2012

Kalahari Resort

1305 Kalahari Drive

Wisconsin Dells, WI 53965

(877)-253-5466

HOTEL RESERVATIONS

If you are in need of overnight hotel accommodations, please contact the hotel directly to make reservations. We have a limited number of rooms “blocked” at a rate of \$129 (also available for Friday). Be sure to mention Wisconsin Reinsurance Corporation when making reservations.

IMPORTANT NOTE:

The “room block” is only available until Tues. 9/11/12. (The rooms will be released to the public after 9/11). They will honor the group rate beyond that BUT only if rooms are available!

TEAM SCHEDULE

Thursday, October 11th

12:30 p.m. Tailgate (aka Registration)

(NOTE: lunch is on your own)

1:00 p.m. Kick-Off (aka Seminar begins)

4:30 p.m. Game Ends (adjourn)

5:30—7:30 p.m. Post Game Wrap-Up

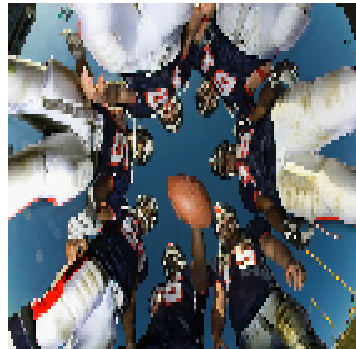
Working social at Moose Jaw Brewing Co.
(review of the game)

Friday, October 12th




9:00 a.m.—12:00 p.m.

Monday Morning Quarterback

It’s all about the TEAM!



GAME HIGHLIGHTS:

-  **The Insured’s Duty to Cooperate**
-  **Investigating the Fire Scene**
-  **Preventing the Loss**

REGISTRATION FORM

MLPA “BIG GAME”

Oct. 11-12, 2012

Registration Deadline:

September 28th, 2012

Fee: \$30.00/person

Attendee(s):

Company:



Amount Enclosed: _____

Please send this registration form and payment to:

WRC Group

Attn: Nicole Mittenzwei

PO Box 7988

Madison, WI 53707-7988

